

QuarkXPRESS

Convert to PDF & Graphic Guidelines



255 East 20th Street
Chico, CA 95926

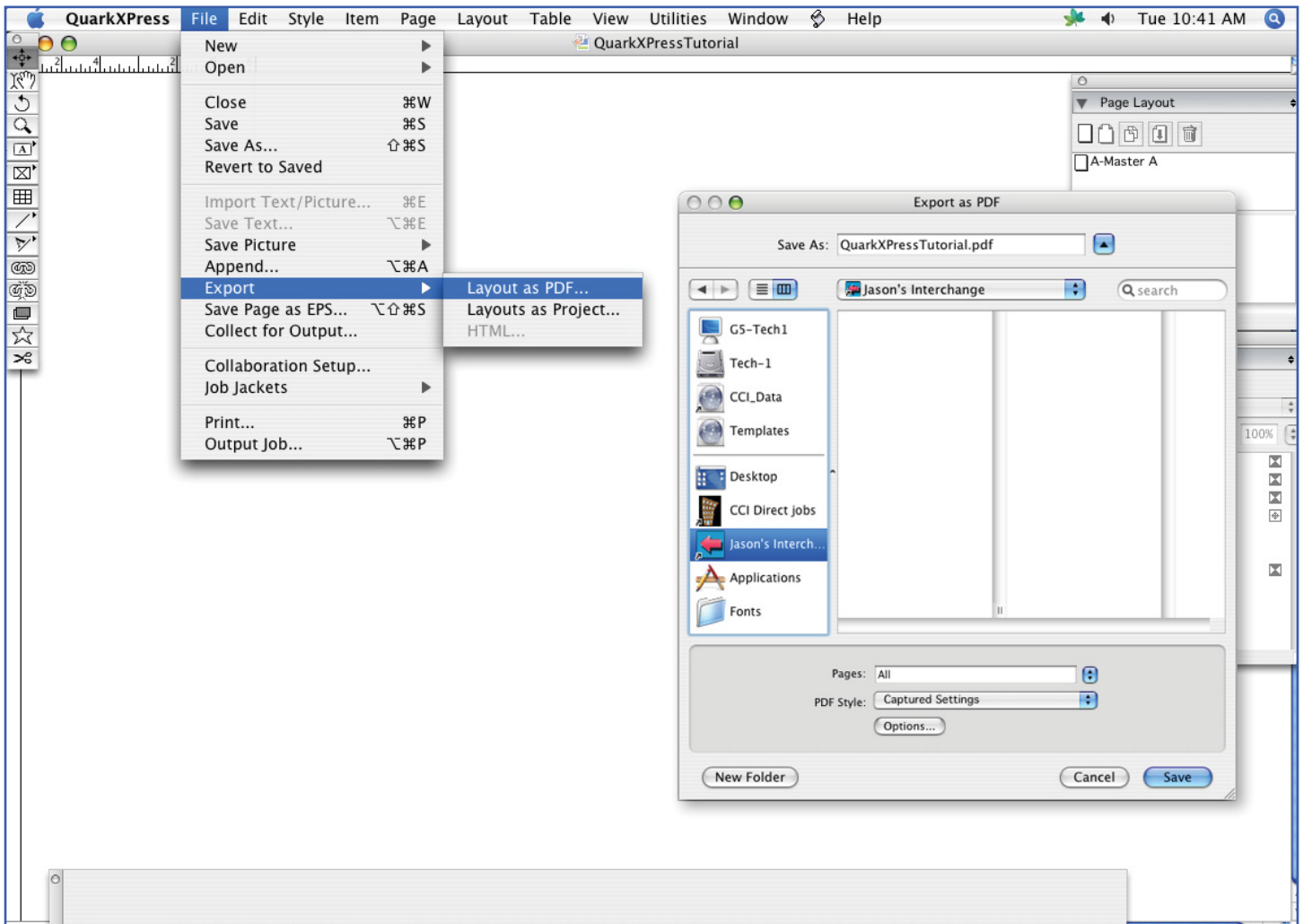
(530) 895-0785
(530) 895-0888 FAX

info@jiffyprintchico.com
www.jiffyprintchico.com

Step 1

Under the “File” menu choose the “Export” and “Layout as PDF...”

Choose a destination for you PDF and Click “Save”.



Step 2

COMPRESSION:

Color Images

Compression: “Automatic ZIP/JPEG High”

Resolution: “Downsample to 300dpi”

Grayscale Images

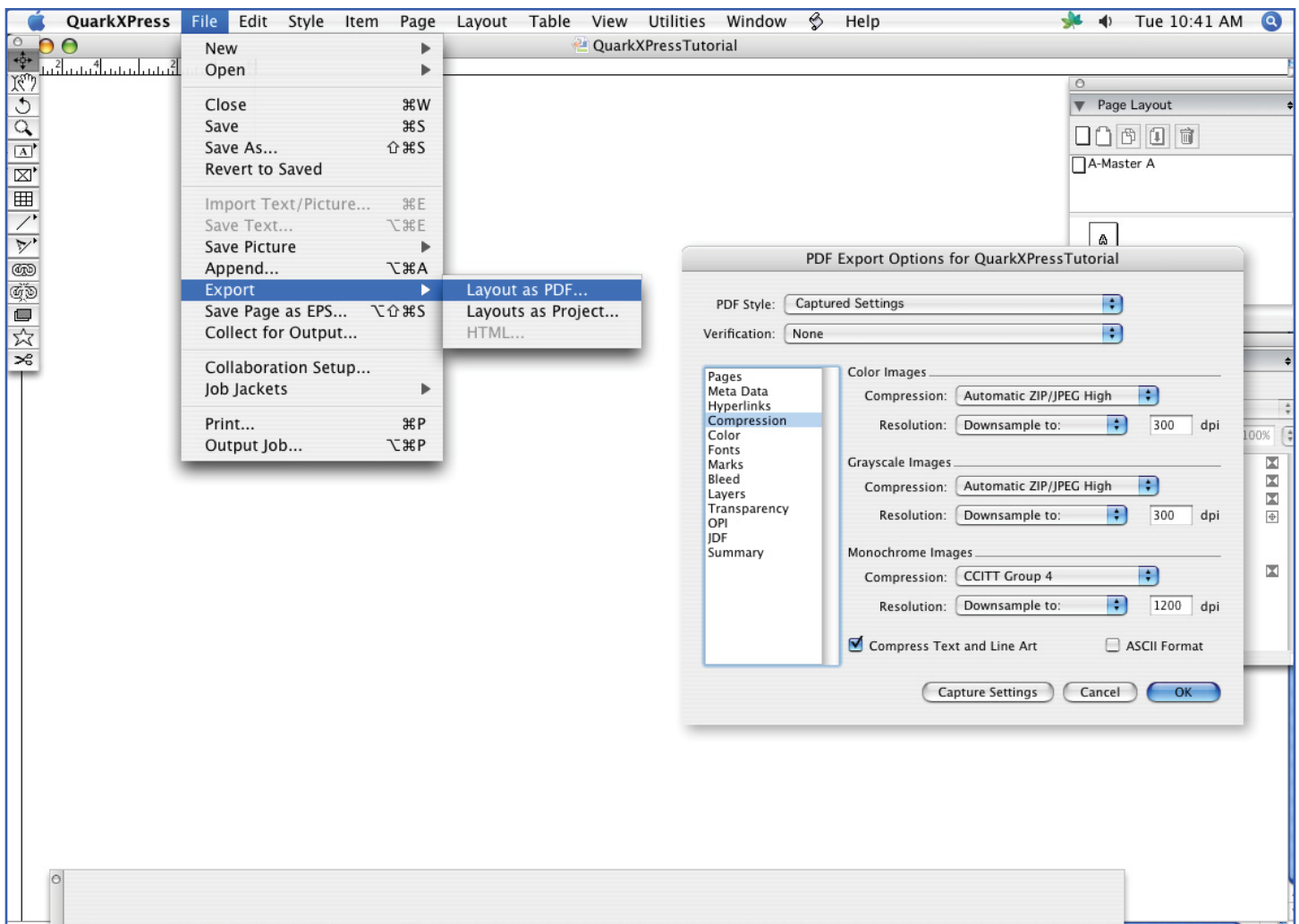
Compression: “Automatic ZIP/JPEG High”

Resolution: “Downsample to 300dpi”

Monochrome Images

Compression: “CCITT Group 4”

Resolution: “Downsample to 1200dpi”



Step 3

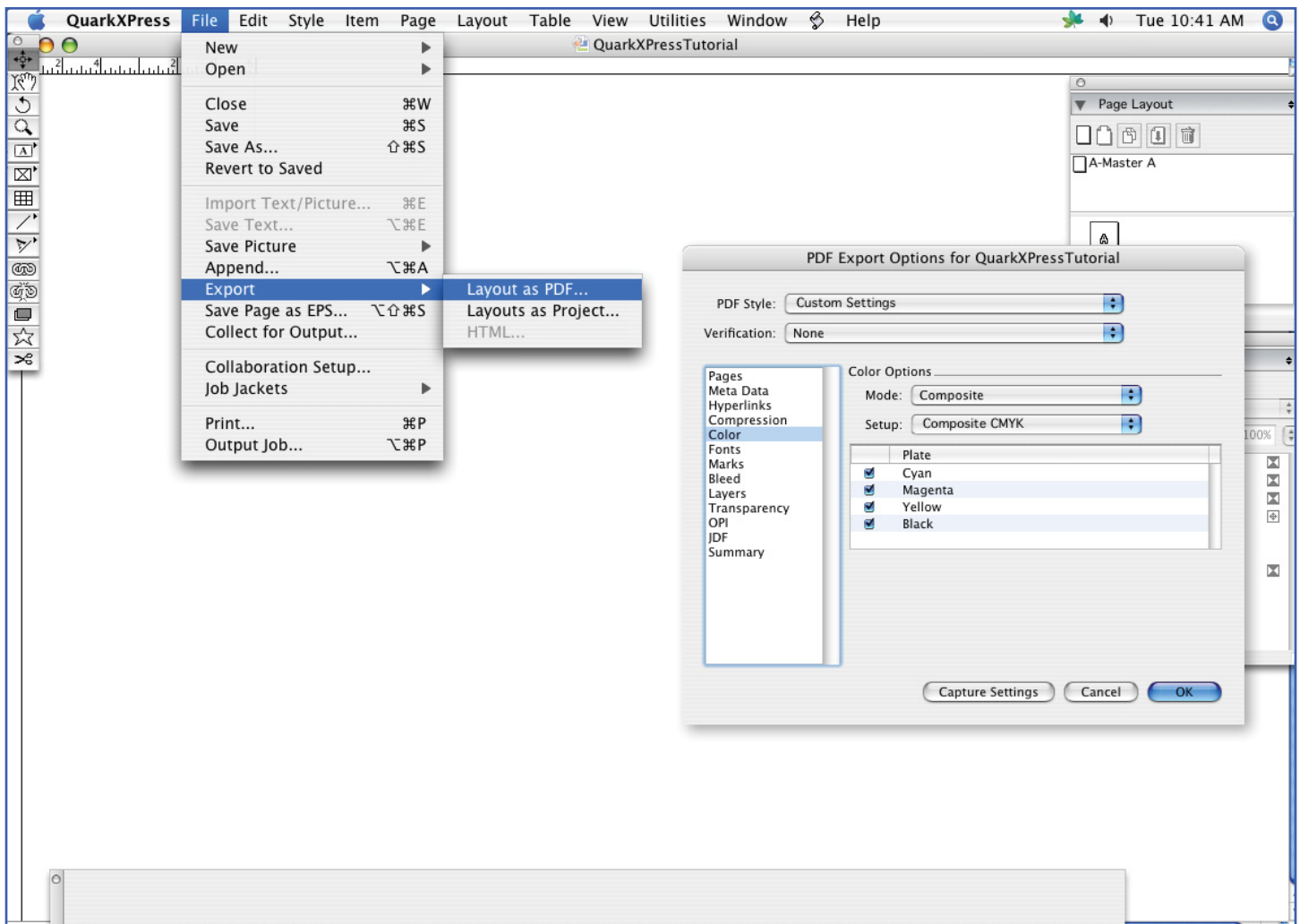
COLOR:

Color Options

Mode: Composite

Setup: Composit CMYK

Note: It is very important to always export file Composite, because we go direct to plate from your files. It is also very important to send Composite CMYK without preserving Spot colors, because many Spot colors will have color shifts when converted to CMYK.



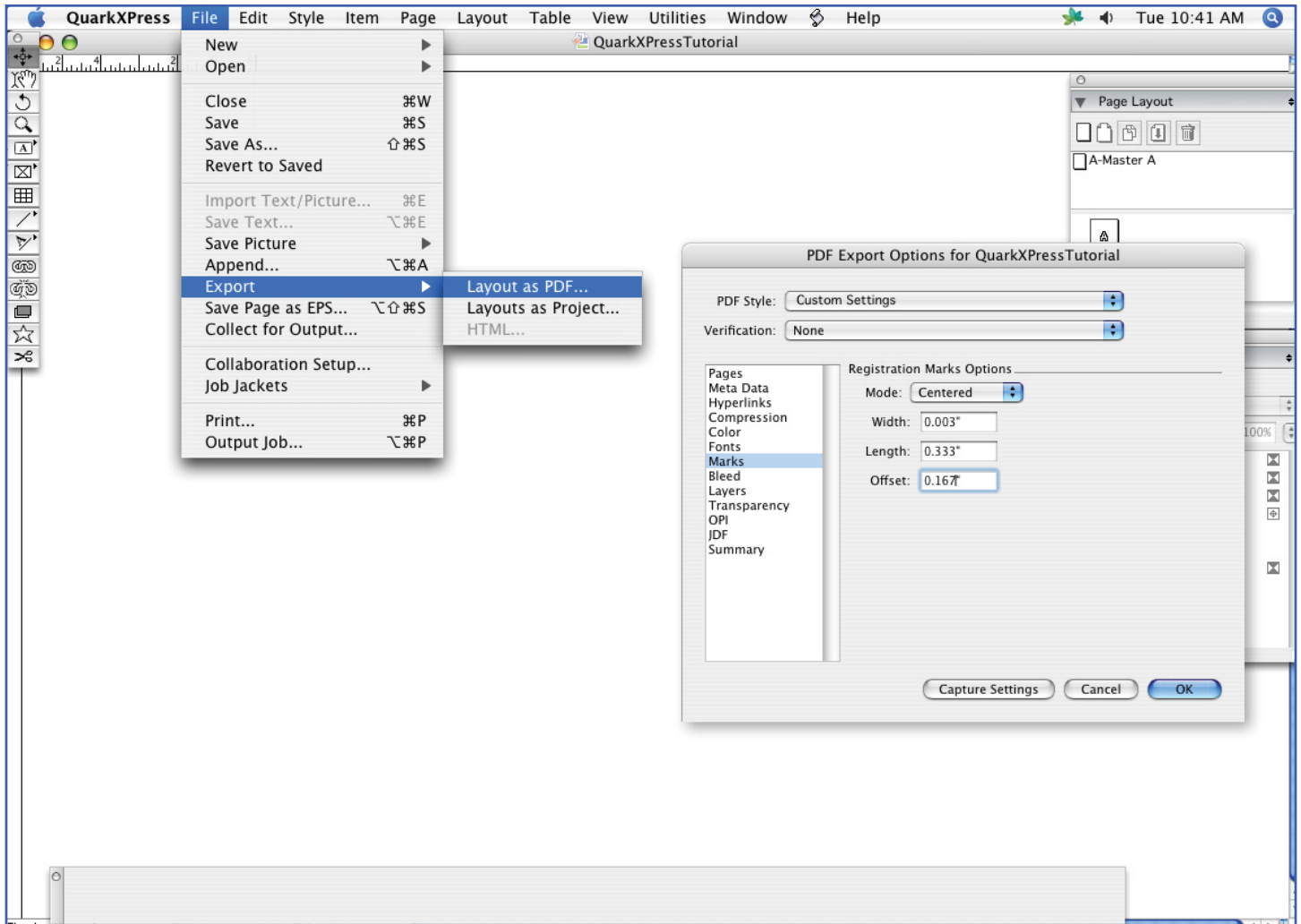
Step 4

MARKS:

Registration Marks Options

Mode: Centered

Offset: 0.167 in



Step 5

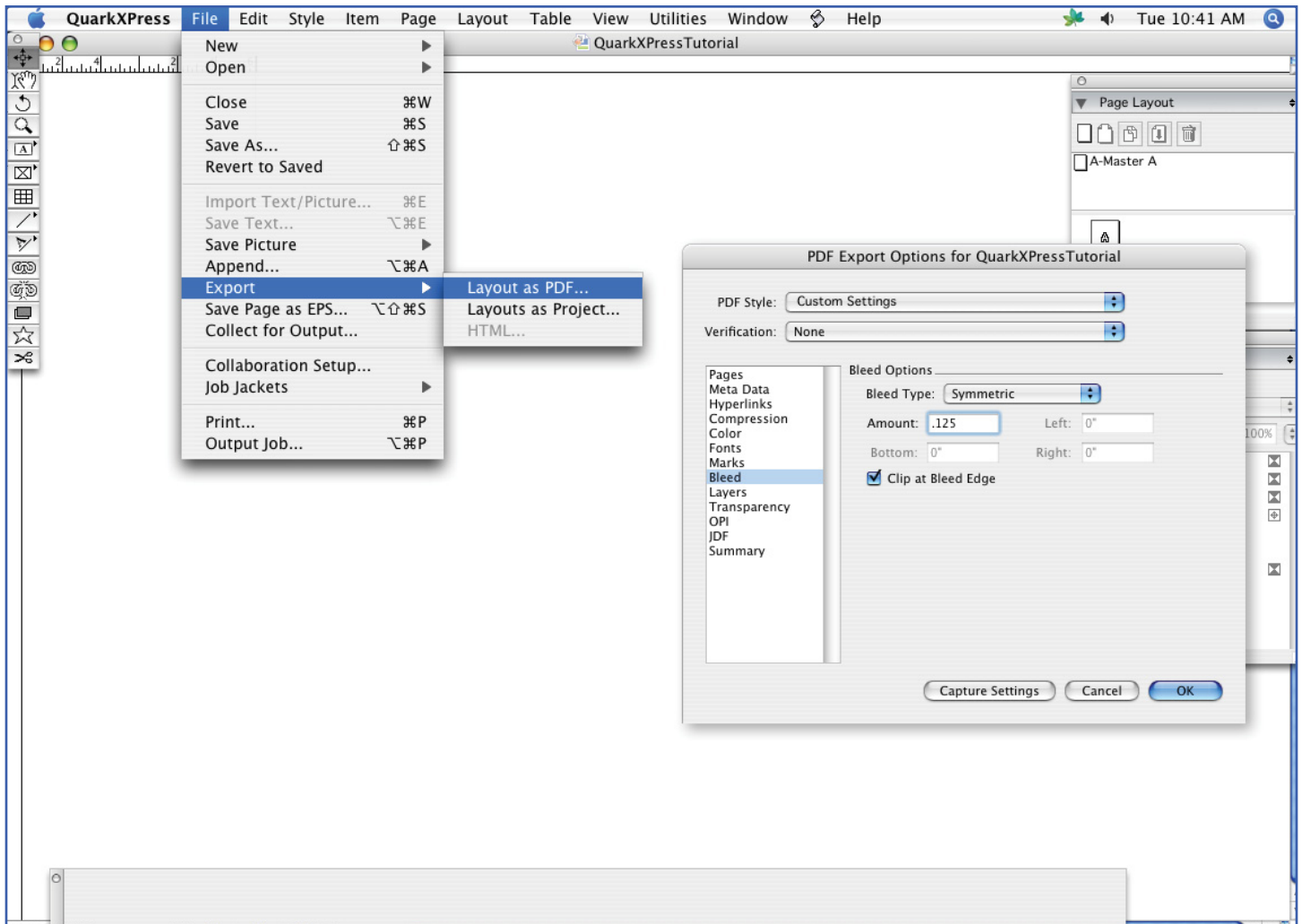
BLEED:

Bleed Options

Bleed Type: Symmetric

Amount: .125 in

Check "Clip at Bleed Edge"



Step 6

TRANSPARENCY:

Transparency Options

Transparency Flattening Resolution: 300dpi

Note: It is very important to be sure that your file is CMYK, before saving to PDF. It is also very important to be sure to expand all Pantone and Spot colors to CMYK before saving to PDF. Failing to do this may result in delays with your order.

Final Note: Always compare PDF to original files to be sure that all material translated correctly to PDF.

